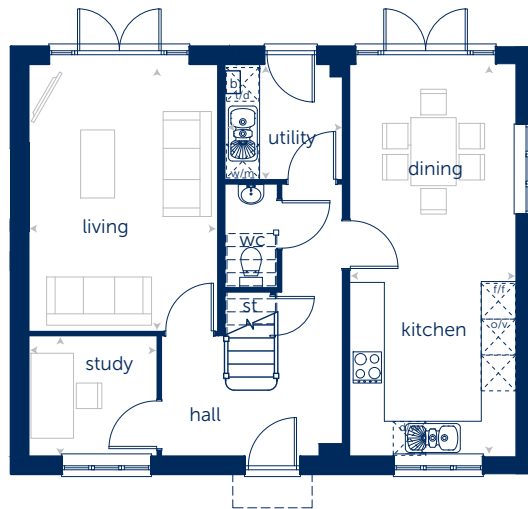


# The Carrisbrooke

Four bedroom home

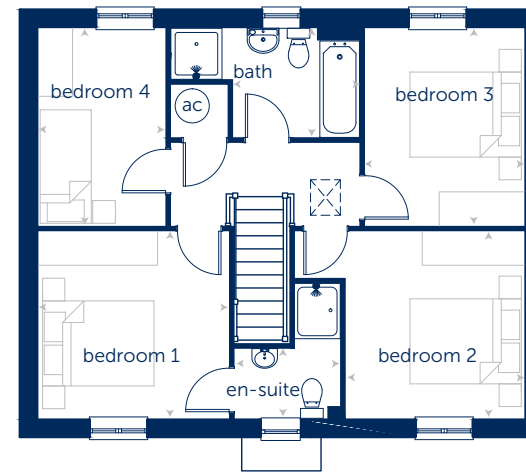


Window & door positions will vary from plot to plot. Please speak to a Sales Advisor for more details



## Ground Floor

|                |                 |                |
|----------------|-----------------|----------------|
| Living         | 4.692m x 3.305m | 15'4" x 10'10" |
| Kitchen/Dining | 6.880m x 2.910m | 22'7" x 9'7"   |
| Study          | 2.240m x 2.100m | 7'4" x 6'11"   |



## First Floor

|           |                 |                 |
|-----------|-----------------|-----------------|
| Bedroom 1 | 3.300m x 3.300m | 10'10" x 10'10" |
| Bedroom 2 | 3.300m x 3.135m | 10'10" x 10'3"  |
| Bedroom 3 | 3.485m x 2.810m | 11'5" x 9'3"    |
| Bedroom 4 | 3.485m x 2.240m | 11'5" x 7'4"    |

Items shown may be subject to change, and positions could vary from those indicated on this floorplan. Please refer to Sales Advisor for details of your selected plot.

Computer generated image shown overleaf. External finishes, landscaping and configuration may vary from plot to plot. Please refer to Sales Advisor for further details. All dimensions are approximate and should not be used for carpet sizes, appliance spaces, or furniture. Furniture not to scale and all positions are indicative. Wardrobes are shown to suggest position only, and are not included as standard unless otherwise stated. We operate a policy of continuous improvement and individual features such as kitchen and bathroom layouts, doors, windows, garages and elevational treatments may vary from time to time. Consequently these particulars should be treated as general guidance only and do not constitute a contract, part of a contract or a warranty.

Bellway Homes Ltd,  
 (Northern Home Counties Division)  
 St Andrews House,  
 Caldecotte Lake Drive,  
 Caldecotte,  
 Milton Keynes MK7 8LE  
 Telephone 01908 364200  
[www.bellway.co.uk](http://www.bellway.co.uk)